

Kelas Paralel KUPI 2

Membangun Pengetahuan dan Kesadaran Kritis tentang
Gender dan Radikalisme Agama

Krisis, radikalisme & kepemimpinan
perempuan

Kamala Chandrakirana

Rukun Bestari

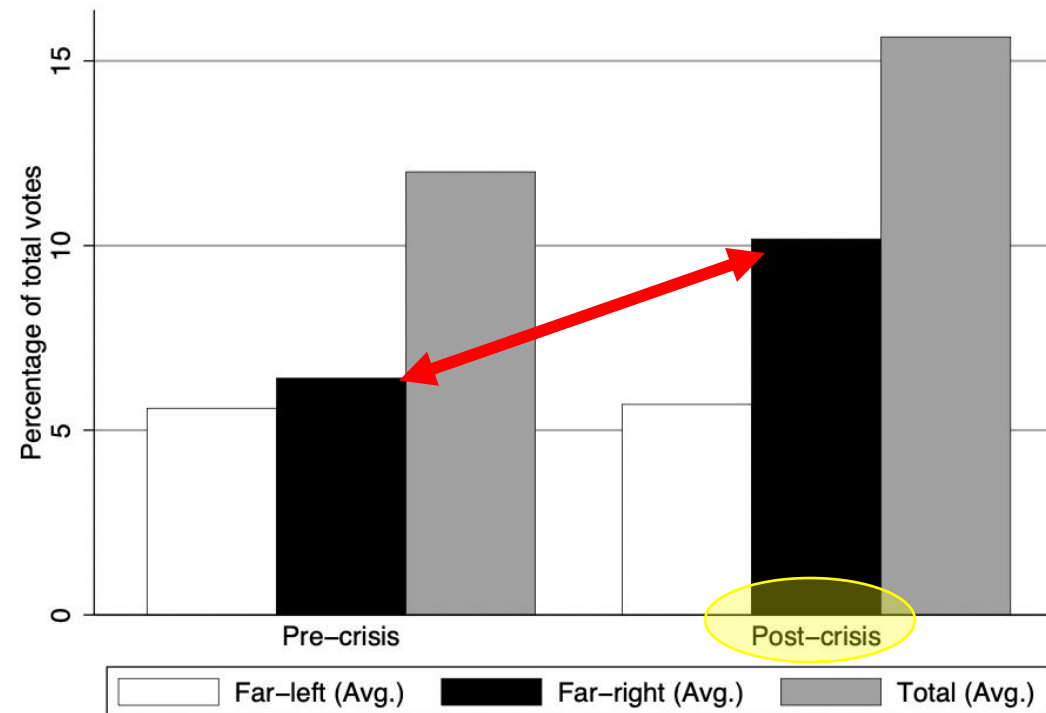
Jepara, 25 November 2022

Radikalisme
bukan
fenomena
baru,
beragam
bentuk dan
selalu
kontekstual



Hasil analisis 827 pemilu di 20 negara Barat tahun 1870-2014: Sebelum dan setelah krisis ekonomi

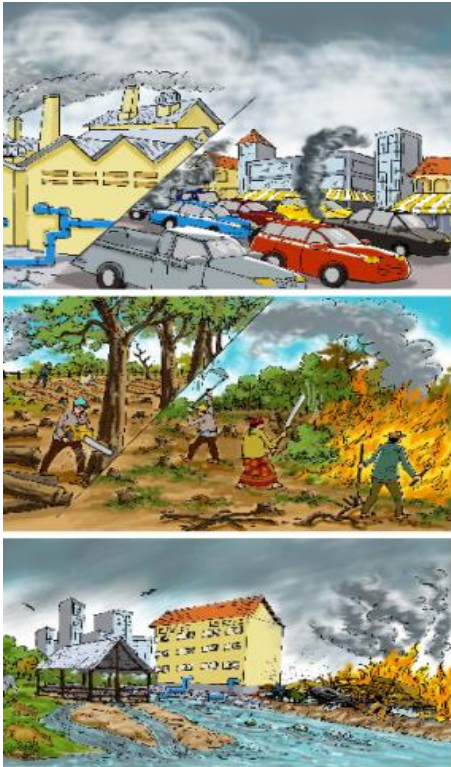
Figure 1: Vote shares of the far right and left

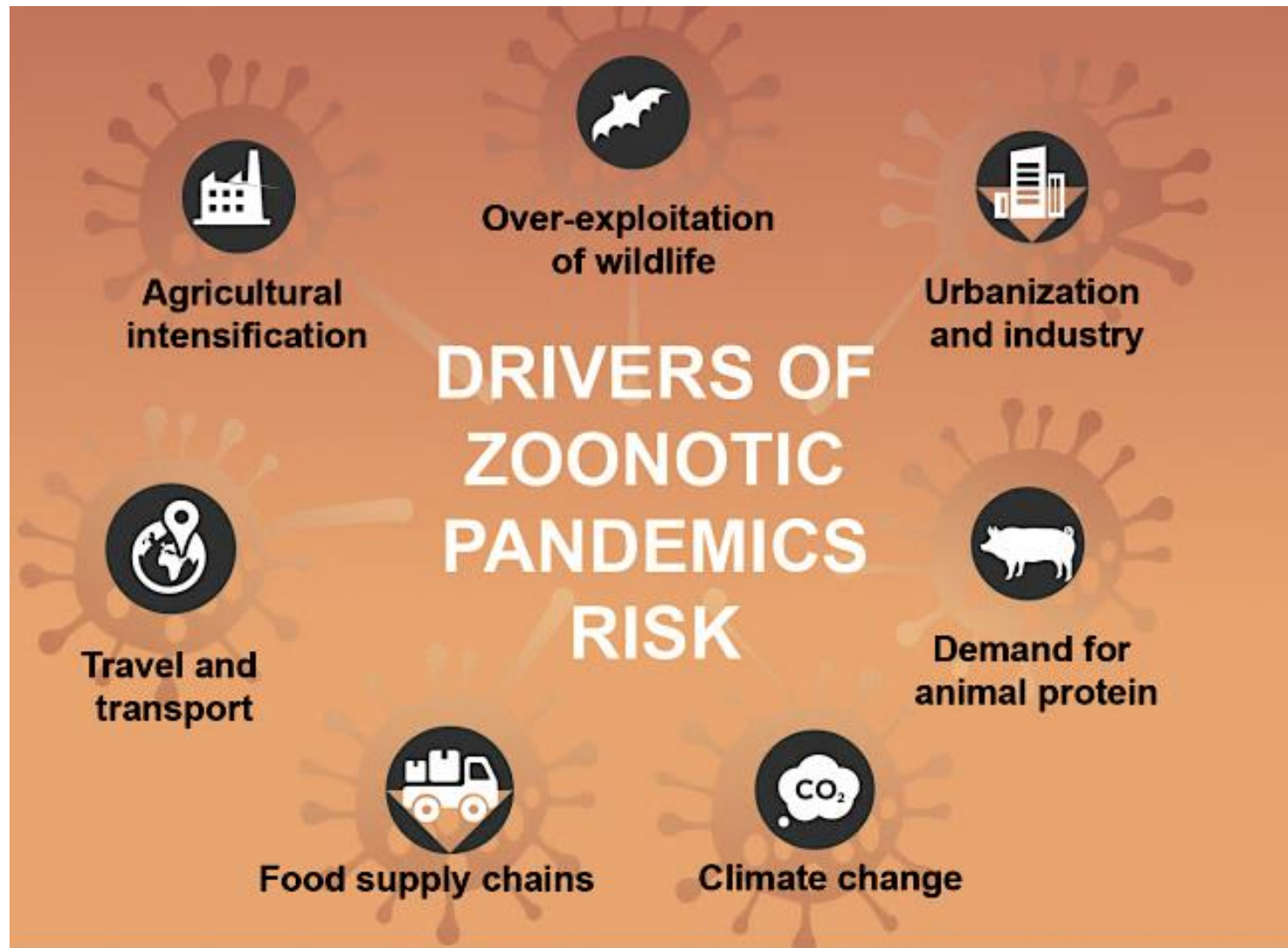


Sumber: Funke, Schularik, Trebesch (2015), Politics in the Slump: Polarization and Extremism After Financial Crises, 1870-2014.

CRISIS

The word "CRISIS" is rendered in large, bold, red 3D block letters. It is positioned on a white, flat surface that has cracked and broken apart, with several jagged fissures extending from the base of the letters. The lighting creates soft shadows on the surface, emphasizing the three-dimensional nature of the text.







WORLD'S INFLATION WORRIES

CRUDE HAS JUMPED 15% SINCE RUSSIAN INVASION OF UKRAINE

PRICES RISE AMID SUPPLY DISRUPTION FEAR

CRUDE OIL

RUSSIA exports **6.5** million barrels of oil a day



NATURAL GAS

RUSSIA accounts for **17%** of natural gas production



WHEAT

RUSSIA AND UKRAINE account for **29%** of all wheat exports



FERTILIZER

RUSSIA accounts for **15%** of global trade in nitrogenous fertilizers and **17%** of global potash fertilizer exports

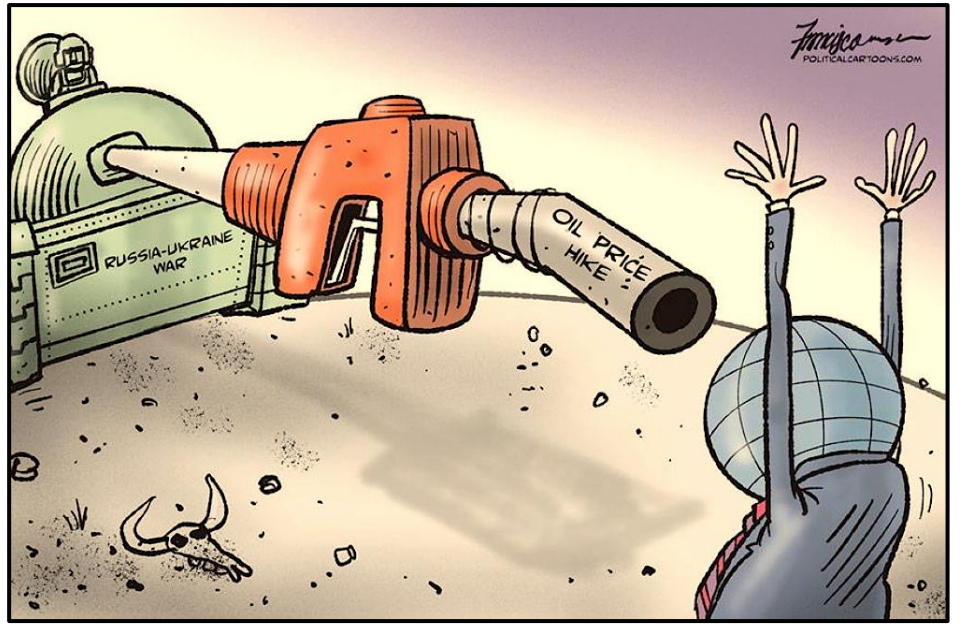
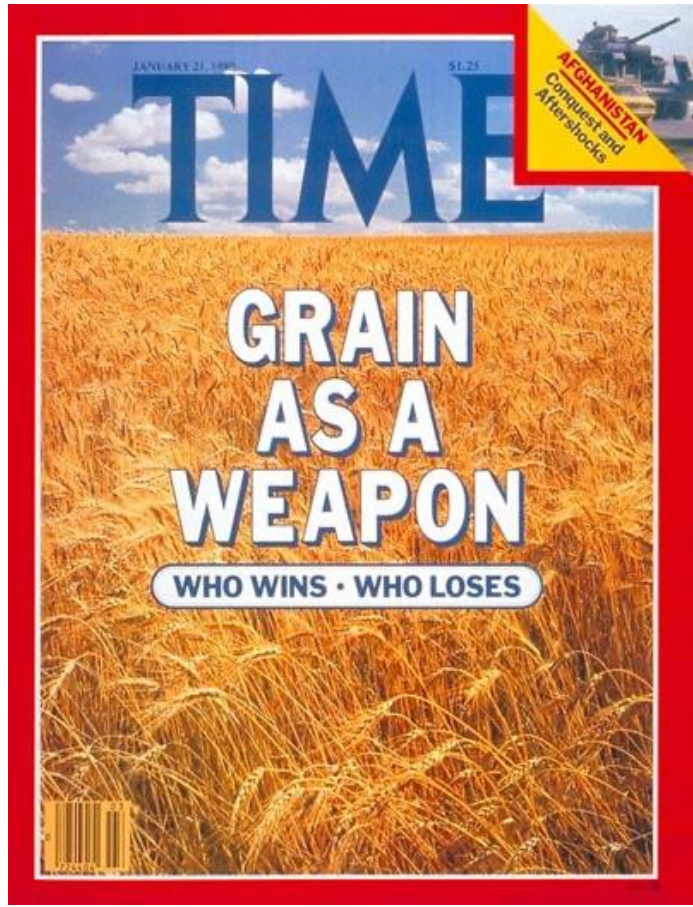


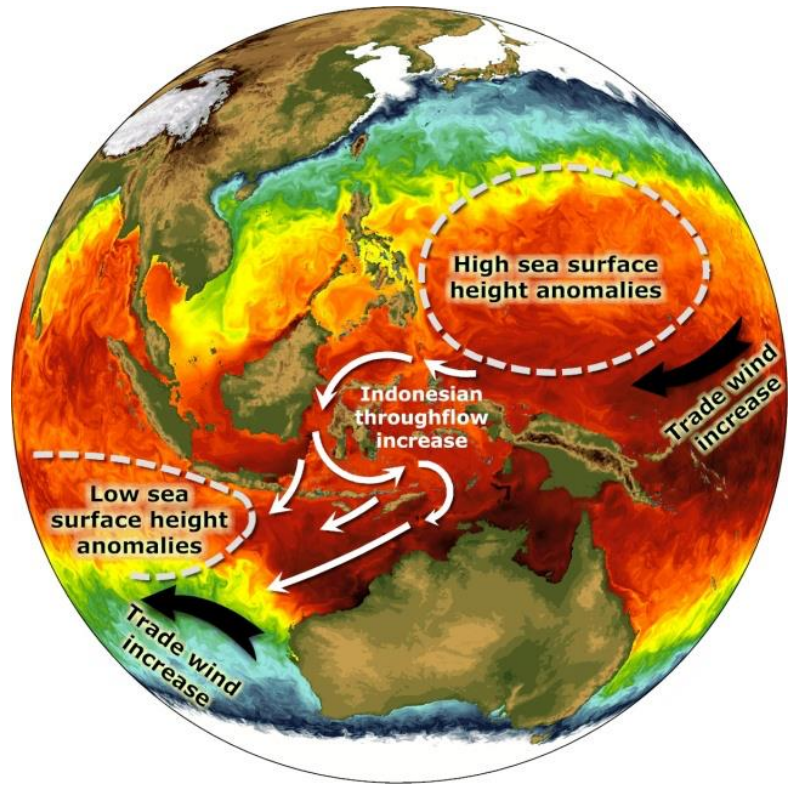
SUNFLOWER OIL

RUSSIA AND UKRAINE account for **75%** of sunflower oil exports



Source: BP, International Food Policy Research Institute, media reports







Istilah “radikal” & “ekstrimis” juga pe-label-an dalam pertarungan politik



Esensial: Misi (ideologi) gerakan



Islamisme sebagai ideologi totalitarian – Mehdi Mozaffari

- Sebagai ideologi yang bersifat totalitarian, Islamisme punya 4 elemen: ideologi keagamaan; interpretasi Islam secara holistik; misi penguasaan (*conquest*) dunia; pemanfaatan segala cara untuk mencapai tujuan akhir > kekerasan bukan satu-satunya cara yang digunakan dan bukan prasyarat untuk tercapainya tujuan
- Islamisme percaya pada ketidakterpisahan (*indivisibility*) antara agama, gaya hidup and pemerintahan dengan arahan spesifik tentang perilaku politik, ekonomi dan sosial > kesemuanya mengandung cara pandang tertentu tentang relasi gender
- Islamisme adalah gerakan yang terbelah (*divided movement*) tanpa ada sumber kepemimpinan global yang tunggal dan dengan perwujudan yang beragam di tingkat nasional

Sumber: Mozaffari, M. (2007). What Is Islamism? History and Definition of a Concept. *Totalitarian Movements and Political Religions*, Vol. 8(1), 17-33

indigenous peoples' rights and access to resources
 party machines gender equality
 frustration over social & environmental apathy
 economy by supporting founders and investors
 unresponsive government
 patriarchical colonial capitalism
 mental health issues
 economic growth
 lack of support to global south based movements and frontline communities
 increasing concentration of capital
 creating culture
 political division
 economic and political power
 lack of intersectionality & commonly defined
 capitalist inequity
 misinformation
 deforestation
 poverty
 decay in democratic governance
 crisis of imagination on the future of work
 endemic scarcity in kingston, ny
 global polycrisis
 societal transformation
 dysfunction
 public finance
 crisis in democracy
 lack of funding globally
 dysfunctional democracy
 environmental, social, technological, and economic/financial stressors
 lack of genuine collaboration to address the planetary boundaries
 carbon emissions

for the next
 pandemics
 systemic unsustainability
 dysfunctional governance of funding flows
 over/undershoot of ecological & social thresholds
 political exclusion
 sensemaking crisis
 distribution of value in the workplace
 the gig economy
 sensemaking crisis
 sensemaking crisis
 sensemaking crisis

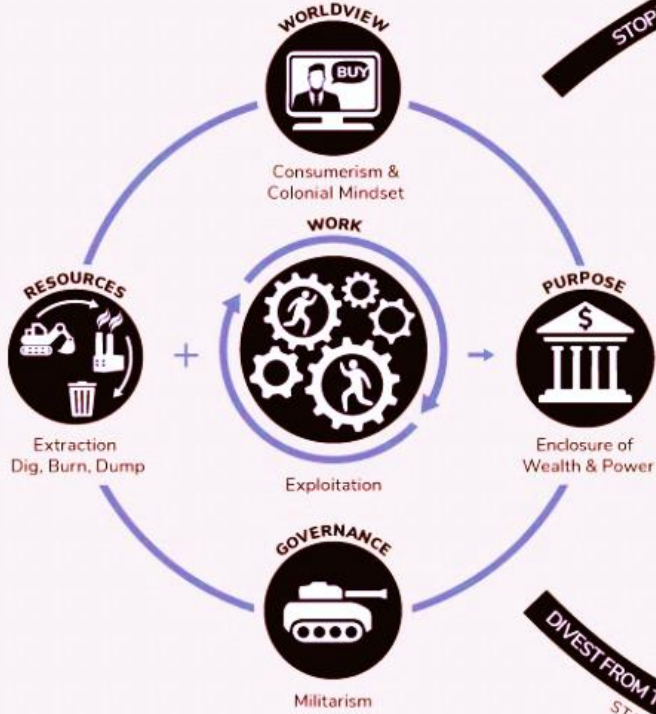
polycrisis

climate change

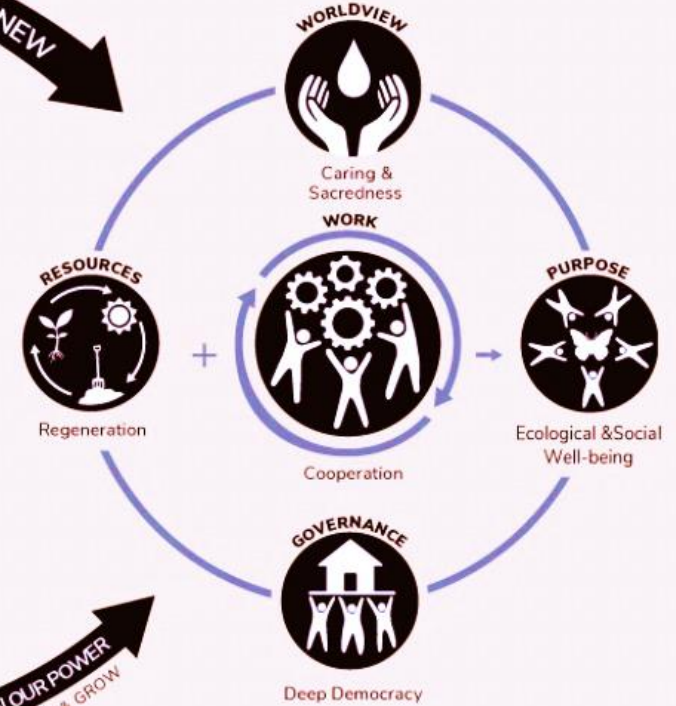
biodiversity loss
 polarization
 workers' rights and bargaining power
 end stage capitalism
 inequality
 corruption
 escalating rates of habitat loss for flora and fauna
 climate
 economic inequality
 unethical algorithms



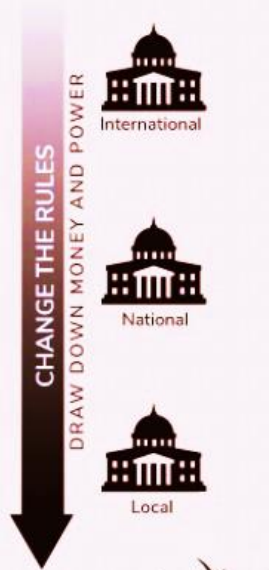
Extractive Economy



Regenerative Economy



STOP THE BAD
SOLUTIONS THAT ARE VISIONARY AND OPPOSITIONAL
BUILD THE NEW



DIVEST FROM THEIR POWER
STARVE & STOP

INVEST IN OUR POWER
FEED & GROW









**KONGRES
ULAMA
PEREMPUAN
INDONESIA**
KE-2



ULAMA PEREMPUAN & PERADABAN MENGENAL ISU-ISU DALAM KUPI II

Kongres Ulama Perempuan Indonesia (KUPI) II akan membincangkan lima isu aktual, mulai persoalan kebangsaan, lingkungan, hingga perlindungan jiwa perempuan akibat perkosaan. Kongres ini akan menghasilkan sikap dan pandangan keagamaan yang bisa dirujuk oleh masyarakat. Apa saja isu-isu yang dibahas? Mengapa isu tersebut dianggap penting? Simak selengkapnya #KUPITalks #2.